



# SAPPORO UNIVERSITY

## GUIDE BOOK

for INTERNATIONAL STUDENTS

## Sapporo University

3-7-3-1, Nishioka, Toyohira-ku, Sapporo, Japan 062-8520

Tel +81-11-852-9138 (Sapporo University International Communication Center)

E-mail [suicc@ofc.sapporo-u.ac.jp](mailto:suicc@ofc.sapporo-u.ac.jp)



University Homepage  
[www.sapporo-u.ac.jp](http://www.sapporo-u.ac.jp)

Guide Book

English



札幌大学



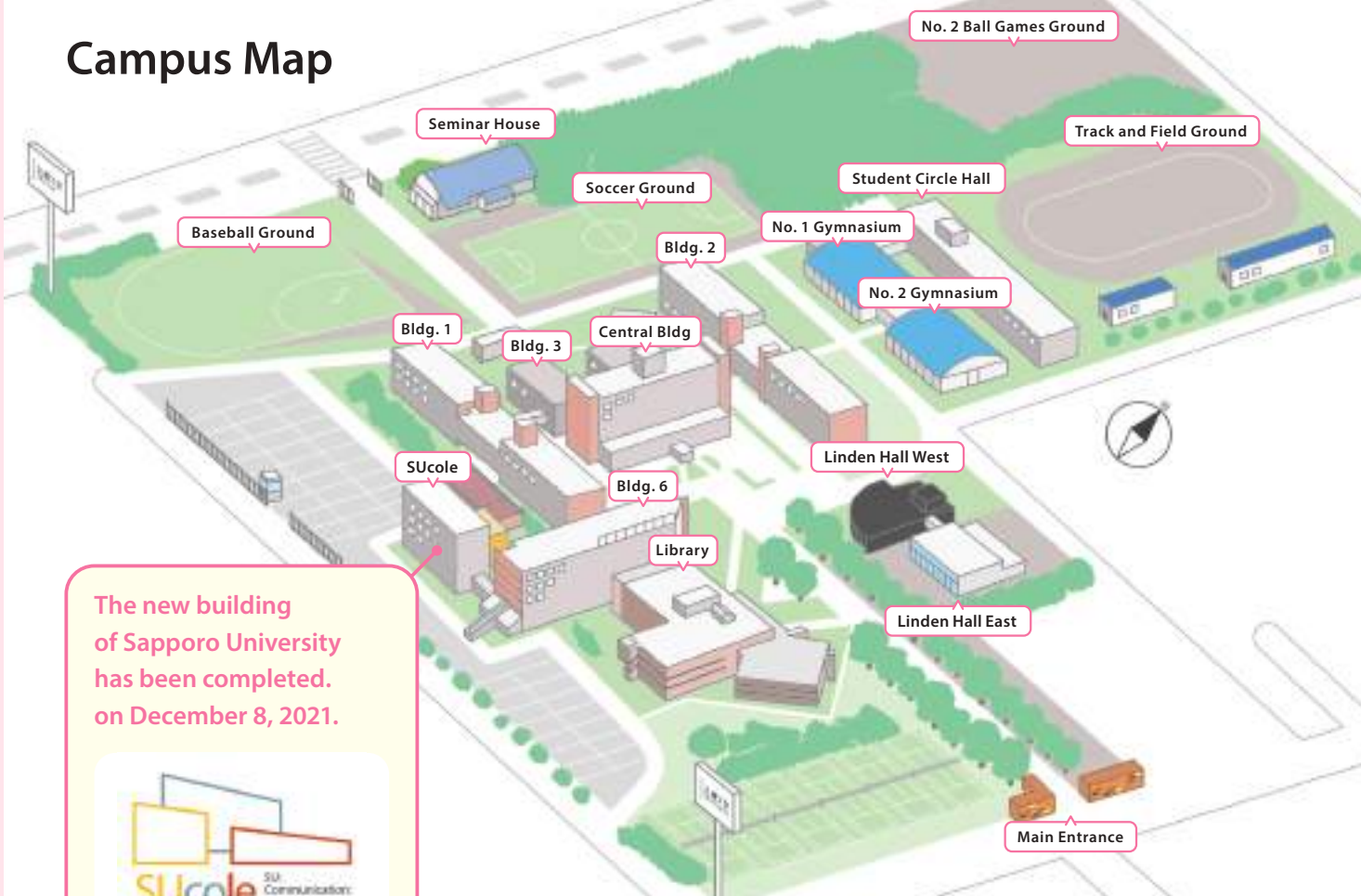
# Sapporo University

The founding spirit of Sapporo University is

“生氣あふれる開拓者精神 (Seiki Afureru Kaitakusha Seishin)”.

This contains a wish that students could value the attitude of always challenging for studying and extracurricular activities positively.

## Campus Map



The new building of Sapporo University has been completed. on December 8, 2021.



## President's Message



President  
OMORI  
Yoshiyuki

Since its foundation in 1967, Sapporo University has sent out more than 60,000 graduates who are playing active roles in the economy and society of Hokkaido. International exchange is also flourishing at SU by accepting international students actively. There were 230 students at a peak, and about 100 international students learning at SU in 2019.

There are Staffs who are fluent in English, Chinese and Russian in Sapporo University International Communication Center (SUICC). They can support international students who have not get used to the life in Japan and study at SU.

Sapporo University is aimed to be the friendliest university to international students in this way.

We are looking forward to meeting you at SU.

# Four Year Academic Plan

Sapporo University uses a “college and majors” system which provides students

with the flexibility to take a broader selection of courses according to their interests.

Students' learning could be more plentiful by combining majors.

## Enroll in Faculty of Collaborative Regional Development

### Core Educational course

- Basic subjects (Introduction of Major, Foreign Languages, Information and Japanese Literacy, etc.)
- Career subjects (employment-focused education)
- Basic subjects of contemporary liberal arts
- **Subjects for international students**  
(beginner to intermediate level Japanese language classes)

Students can acquire a wide range of liberal arts which is necessary in society and prepare for the full-scale learning from the second year. This is recommended for those who are worried about taking specialized subjects in Japanese or those who can't decide majors.

## Choose a major

Economics	Business Administration	Law
English	Russian	History and Culture
Japanese Language and Culture	Sports Culture	Liberal Arts

Business Administration and Japanese Language and Culture are particularly popular among international students.

At Japanese Language and Culture, students are conducting specialized research on Japanese culture and classics.

### Transfer from overseas partner universities

Students are studying at home university for 2~3 years and SU for 2 years.  
After transferring, students choose a seminar and study specialized subjects.

Full-scale research begins.  
You may meet lifelong friends in your seminar.



## Choose a seminar

## Write a graduation thesis

## Employment and further education (FY 2015-2021 results)

### Main employers (in Japan)

- Bic Camera
- ANA New Chitose Airport
- ISHIYA Co.,LTD.
- Laox Co.,LTD.
- E+Craftman Co.,LTD.
- ZERO PLANNING
- AGEKKE
- ECOMIC Co.,LTD.
- Daimaru Matsuzakaya Department Stores
- AIN HOLDINGS INC.
- GRANVISTA Hotels & Resorts
- Furano City Office
- Rakuto Travel
- ISC
- Yodobashi Camera Multimedia Sapporo Store
- Tomiei Trading Co Ltd.
- Kyosho Co.,Ltd.
- Hrein Energy Inc.
- ...etc.

### Main employers (overseas)

- BANK OF CHINA
- Shanghai Yexin Trading Co. Ltd
- Jeonju University
- Chailease International Finance Corp.
- NITORI (CHINA) HOLDING CO., LTD.
- ...etc.

### Main graduate schools

- Hokkaido University Graduate School
- Osaka University Graduate School
- Hokusei Gakuen University Graduate School
- Hitotsubashi University Graduate School
- Tokyo University of Foreign Studies Graduate School
- Hiroshima University Graduate School
- Prefectural University of Kumamoto Graduate School
- University of Southern California Graduate School
- Sapporo University Graduate School
- ...etc.

## Table of Contents

### University Overview

▶ P1

### Academics

▶ P2

### About Hokkaido

▶ P5

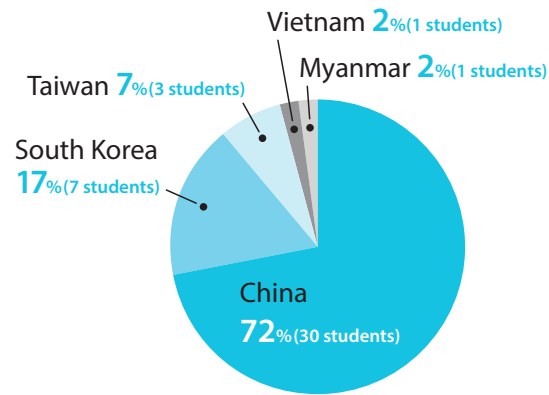
### International Student Support

▶ P6

# International Students at Sapporo University

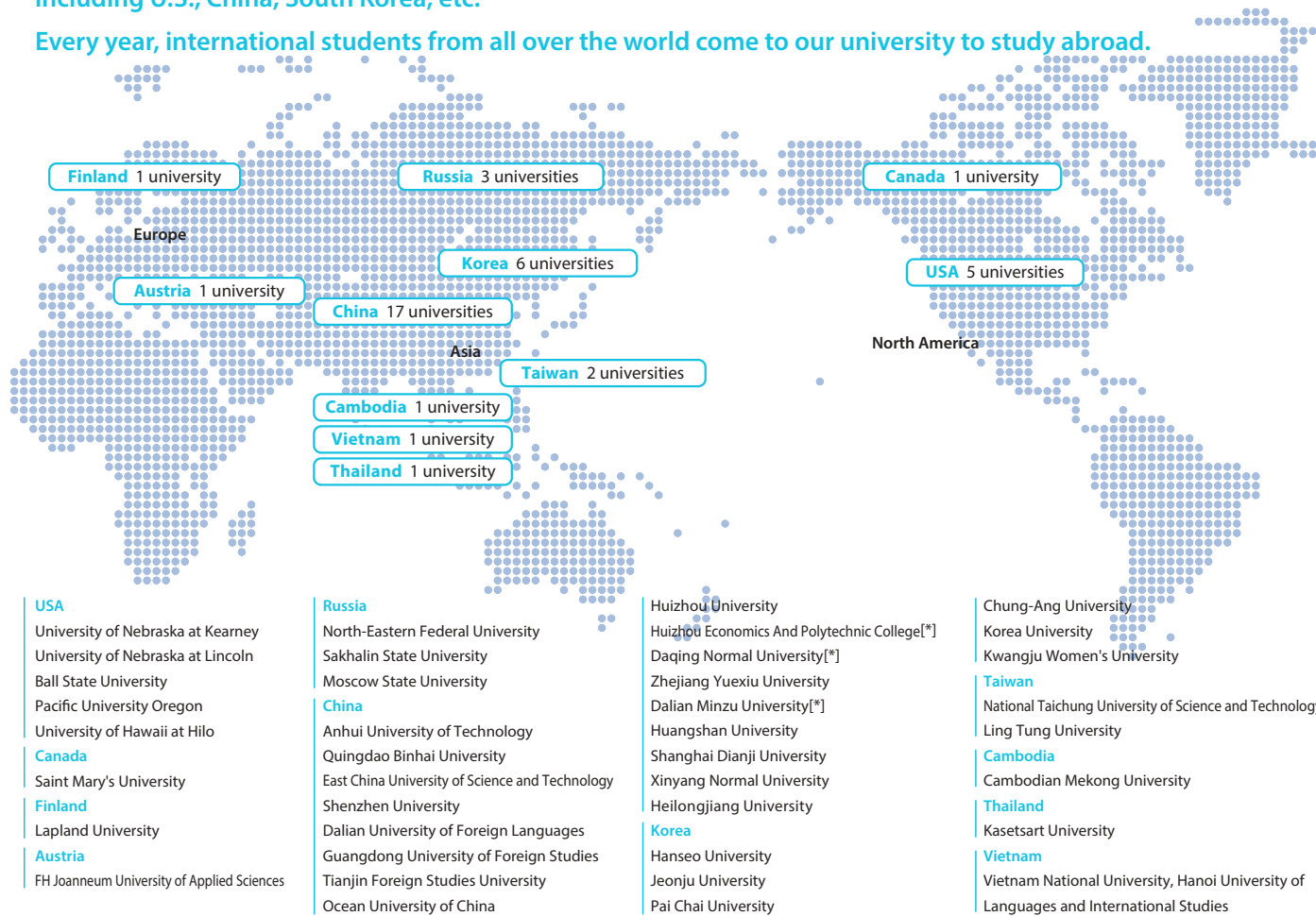
There are 42 international students from 5 countries and regions studying at Sapporo University as of May 1, 2021.

Percentage of International Students  
(Separated by country and region)



## Overseas Partner Institutions (As of April 2022)

Sapporo University is in partnership with 39 institutions in 11 countries and regions overseas, including U.S., China, South Korea, etc.  
Every year, international students from all over the world come to our university to study abroad.



\* There are some requirements in the cooperation with some partner universities. We only have transfer agreement between those with [\*].

# Enrollment Selection \*For the details, please see the application guidelines. \*Contents are subject to change.

## General Selection for Privately Funded International Students

Recruitment Number	Major	Test Venue	Test Content	Requirements for Application
20	College *1	Sapporo University	1. Document screening 2. Written test 3. Interview	Have sufficient Japanese proficiency to study at our university and have taken one of the following examinations. Have taken "Japanese as a foreign language" and "Japan and the world" of Examination for Japanese University Admission (EJU) for international students held by Independent Administrative Institution Japan Student Services Organization (JASSO) in 2022. However, in the previous schedule, residents of countries and regions which have not conducted EJU, are qualified if they have taken Japanese Language Proficiency Test (JLPT) N2 or above conducted by Japan Foundation and Japan Foundation for International Education Support in 2022.

\*1 Choose the major you want to study when you apply.

## Transfer Examination (Partner universities)

Recruitment Number	Major	Test Venue	Test Content	Requirements for Application
Few	9 majors	Partner school	1. Document screening 2. Written test 3. Interview	1. Enrolling in an overseas university which has a partnership agreement with SU. 2. Have completed at least the first two years of university and have accrued at least 60 credit hours (including at least four credit hours of a foreign language) by the time of enrollment in Sapporo University. 3. Have passed Level 2 or higher of the Japanese Language Proficiency Test (JLPT) or have Japanese language ability equivalent to it.

# Tuition and Financial Support

## Academic Scholarship for self-funded international students was issued from 2021 academic year

This is a system awarding a scholarship equivalent to 10% of the tuition fee.  
if student's academic performance of the previous semester meets the criterion set by SU.

1 semester tuition for regular students ¥385,000		
1 semester tuition for international students ¥269,500	Tuition exemption (20%)	Academic Scholarship (10%)

\* This is the price to which Academic Scholarship for international students applied. \*Academic Scholarship for international students is applied from the 1st fall semester.  
\* This information is for students enrolling in 2022. Information is subject to change without notice for students enrolling from 2023.

## Tuition for international students (2022 academic year)

\* The following table shows the price after tuition reduction for international students. The amount in [ ] is the price to which Academic Scholarship is applied.

ITEM	Spring Semester	Fall Semester	First Year Total
Enrollment Fee	¥200,000	-	¥200,000
Tuition (After reduction)	¥308,000	¥308,000 [¥269,500]	¥616,000 [¥577,500]
Facilities and Equipment Fee	¥60,000	¥60,000	¥120,000
Education Enhancement Fee	¥5,000	¥5,000	¥10,000
Total	¥573,000	¥373,000 [¥334,500]	¥946,000 [¥907,500]

\* Please pay the incidental fees (42,500 yen) in the process of admission. (Breakdown: 3,500yen for student union enrollment, 4,000 yen for student union membership, 10,000 yen for supporters association, 25,000 yen for alumni association)  
\* No enrollment-related school bonds, debentures, etc., will be collected.  
\* Enrollment fee and some incidental fees only need to be paid at the first academic year, this also applies to transfer students.  
\* The above information is for new students of 2022 academic year. Information for the 2023 academic year onward is subject to change without notice.  
\* Education enhancement fee from the second year will be ¥25,000 in half semester.



# Life in Sapporo

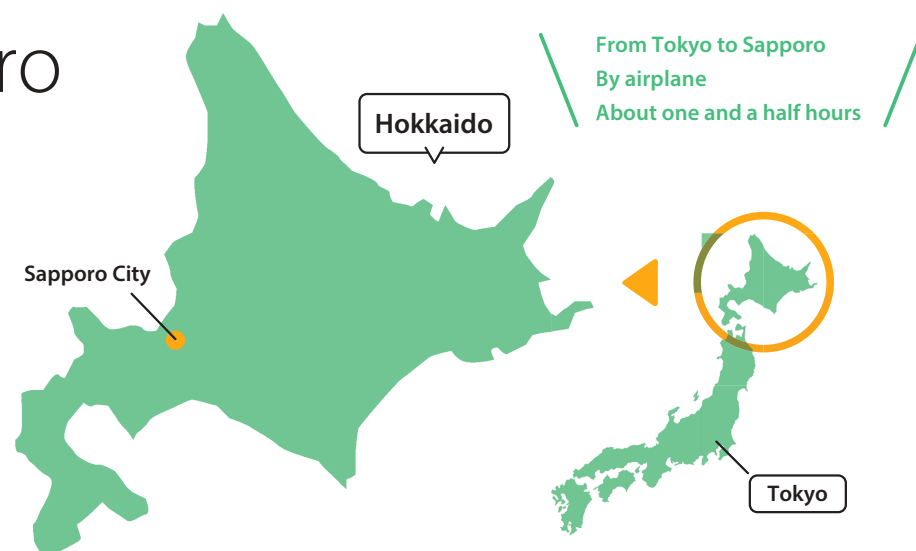
## Population

Approx. **1.9 million**

## Temperature

Summer **26°C**

Winter **-7°C** (average)



## Four Seasons in Sapporo

An urban city full of nature. Clear skies and clean air.

### Spring



- Sapporo Lilac Festival

### Summer



- Sapporo Beer Garden
- Toyohira River Fireworks Display
- YOSAKOI Soran Festival

### Autumn



- Sapporo Autumn Fest
- Moerenuma Art Fireworks Display

### Winter



- Sapporo Snow Festival
- Sapporo White Illumination

## Food

Enjoy fresh vegetables and seafood



Ramen



Jingisukan



Sushi

## Living expenses

### Average Rent (living alone in Sapporo)

**¥30,000 - 50,000** per month

(Utilities must be paid separately)

### Average living expenses for an international student (according to student survey)

**¥70,000 - 100,000** per month

### Prices

Bottle of water **¥100**

Bus fare **¥240**

(From SU to Sapporo station)

# Support System

## Sapporo University International Communication Center : SUICC

International students enrolling in SU can get support at Sapporo University International Communication Center (SUICC), so that they can concentrate on their studies with peace of mind and lead a meaningful study abroad life.



## Support Available (examples)

### Status of Residence

Permission to engage in activities other than permitted under the status of residence  
Information management of immigration and domestic travel  
etc.

### Student support

Academic advising  
Scholarship consultation  
Support for job hunting in Japan  
etc.

### Life support

Housing counseling  
Providing living information  
Emergency response  
etc.

## Annual schedule

### April

- Entrance ceremony
- Spring semester begins
- Spring semester orientation
- Welcome party for international student

### June

- University festival
- Japanese culture experience event
- Cross-cultural party

### August

- Summer holiday

### September

- Fall semester begins
- Fall semester orientation
- Hokkaido tour

### October

- Mini welcome party
- Cross-cultural party

### November

- Japanese culture experience event
- Mochi pounding party
- Cross-cultural party

### March

- Graduation ceremony
- Orientation for international students



\* Event date and contents are subject to change.



Sapporo University official website for international students  
<https://intl.sapporo-u.ac.jp/ja/>



SUICC official Instagram  
<https://www.instagram.com/su.suicc/>